

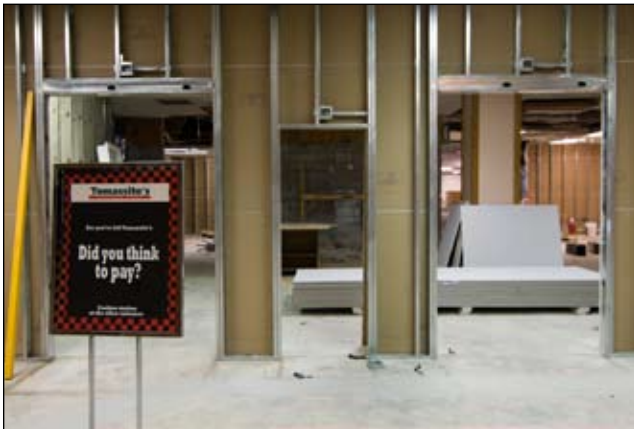


Food Services undergoing changes as Manwaring Center is remodeled

The construction and remodeling of the Manwaring Center has required Food Services to make some significant temporary changes.

The completion of Phase 1 requires Food Services to move all its equipment necessary to function to the first floor of the Manwaring Center, where the old Nordic Landing and Bookstore were located. By moving the equipment, Phase 2 of the construction can begin which will close off the east side of the Manwaring Center. This phase is expected to last a year.

The Galley and Tomassito's will also be closed during this phase. As a solution, the old Nordic Landing and the old Bookstore will be turned into a temporary à la carte eating area. The area will hold seating for approximately 450 people.



Construction on lower level of Manwaring Center.

"It will be much like the old Nordic but have more to offer than before," said Greg Carson, Food Services manager. "We will be combining Tomassito's into this area."

Food that will be served in this temporary spot will be hot "comfort" food, pizza, pasta, a salad and fruit bar, deli sandwiches, Mexican cuisine and the "China Bowl." There will be similarities to Tomassito's with grab-and-go food or food that can be taken home to cook. The area will be open Monday thru Friday from 7 a.m. to 10 p.m. and Saturday from 8 a.m. to 7 p.m.

"It's not going to look pretty," Carson said. "But we'll be doing the best we can for the least amount of impact"

The old Nordic Landing will handle all the kitchen needs for Food Services, along with the mobile kitchen that is attached outside. Because of this smaller area, Food Services won't be able to have the production capability to which it has been accustomed.

University Catering will be affected with this smaller kitchen, resulting in a temporary smaller menu. The more limited menu will soon be posted online. The Catering Pick-up Office will be relocated to the northeast corner of the Auxiliary Services Building next to Stores and Receiving. Hours of operation will be the same.

When Phase 2 is completed, the upstairs Galley will be transformed into a larger dining area with a "marketplace" atmosphere and feel to it. This area will have seating capacity of over 1,000 and a small stage where students can perform.

During Phase 2, JoLynn's Bakery, Freshens, Café Kimball, Café McKay, and the Garden View Café will remain open.

Fall enrollment reaches record number

The number of students attending BYU-Idaho unintentionally reached an all-time high in Fall Semester. Official enrollment statistics show the head count stands at 13,759 students, compared to 13,155 a year ago – a 4.6 percent increase from Fall 2007.

Registrar Kyle Martin said more freshmen students accepted admission to BYU-Idaho than was expected. A new program for returning missionaries also had an impact on the record number. He said the university will take action in the future to bring the number down to the preferred level.

While the number of students is at a record high, the number of full-time equivalent (FTE) students is not. The FTE count now stands at 12,010, compared to a record 12,208 back in Fall 2006. FTE is based on a student taking 15 credit hours.

Martin said the reason that the FTE count also is not at a record is because the average credit load is lower. In fact, the average credit load slipped by 2.6 percent from 13.4 credits in Fall 2007 to 13.1 in Fall 2008.

"We're not exactly sure why this has happened," Martin said. "We suspect two things. There are more married students who take fewer credits and possibly the shorter semester."

Special All-Employee Meeting set for Sept. 24

A special All-Employee Meeting will be held Wednesday, Sept. 24, at 2 p.m. in the Taylor Chapel. Members of the Executive Committee will be in attendance, including Elder Russell M. Nelson and Elder M. Russell Ballard, members the Quorum of the Twelve Apostles; Elder Steven E. Snow, a member of the Presidency of the Seventy; and Sister Julie B. Beck, general president of the Relief Society. Also attending will be Elder Cecil O. Samuelson, a member of the First Quorum of the Seventy and president of BYU; Elder Paul V. Johnson, a member of the First Quorum of the Seventy and commissioner of the Church Educational System; and other CES representatives.

All employees are encouraged attend the event, but classes should not be cancelled. However, faculty with teaching responsibilities during the 2 o'clock hour are encouraged to create alternative ways to deliver their instructional material so, if possible, they can attend.

Changes implemented for campus parking

Short-term parking stalls have been added to the Snow Building and Taylor Building parking lots. These spaces are for employee, student, or visitor use and have a 10-minute limit. These stalls will allow students to drop off heavy loads, such as band instruments, then go park on the street or in student lots.

In an effort to alleviate pressure on surrounding lots, parking in the Smith Building circle near First East and Third South has been converted from "A" parking to short-term parking. The entire lot is now a pick-up and drop-off area, and limited to 10-minute parking. There will be no stopping or waiting along the yellow curb in that area as parking there even briefly clogs the area for cars to drop off and drive through quickly.

Parking in the LDS Church parking lot at the corner of Second South and First East is allowed only by a specific permit. BYU-Idaho has entered into an agreement with local church leaders that allows students to park in the church parking lot weekdays from 8 a.m. to 5 p.m. with a special "F" permit. The permit can be purchased at Parking Services, 150 Kimball, for \$10 per semester. For more information, contact Parking Services.

Summer Construction Report

By Rulon Nielsen, Facility Planning and Construction Director

This summer like all summers in the past, the Facility Planning and Construction Department initiates projects that can only be completed during the warm months. Here is a list of the larger projects undertaken during the summer:

- Concrete replacement throughout campus to improve the safety for pedestrians.
- Resurfacing of the track to provide a safer surface for student activities and the community.

- Roof replacement for the Smith and McKay buildings.
- Upgrades to the data systems on campus.
- Remodeling of Biddulph Hall to provide two additional accessible sleeping rooms.
- Resurfacing or rebuilding of several parking lots.

If you have been gone over the break, the progress on the new auditorium is obvious. The steel frame work is complete on the east over the basketball courts. The white steel will be exposed inside the gym. The pre-cast concrete panels around the assembly area are to height and the final concrete grouting is under way that will allow installation of the long span trusses. There remains a substantial amount of exterior concrete, framing steel, and exterior work before the building is enclosed.

The Manwaring Center will have less progress visible from the exterior. As far as the interior, the University Store has now relocated. Most of the next phase in the Manwaring will be interior work hidden behind construction barriers.

As the new semester starts, remember that the construction barriers are there to protect people from injury, the university from damage claims, and the contractor from OSHA fines. Please respect the barriers and do not enter even for a quick peek.

Portable file storage to replace H: drives

Due to the availability of more effective file storage technology, usage of student home directories (H: drives) and associated WebShare access at BYU-Idaho will end during the Fall Semester. BYU-Idaho has determined that current resources, such as laptop hard drives and thumb drives, are more economical and convenient methods of providing adequate student file storage capacity.

With that in mind, the following changes will occur over the next several months: on August 1 student home directories became "read-only," meaning no further additions or changes may occur, but existing files may be copied to another location. Students must provide their own file storage space from this date forward. On October 31, all student home directories will be deleted and no longer available.

BYU-Idaho encourages students with personal file storage needs to use at least one of the following technologies as the primary location to store their files:

- Laptop computers (most student laptops have at least 60 GB of file space)
- Portable storage drives, such as thumb, flash, or jump drives
- External disk drives
- Personal desktop computers
- Other storage devices or locations

In addition to the primary file storage location, BYU-Idaho also strongly encourages students to routinely back up or copy their files to another storage location.

Elder Gerald N. Lund to speak at devotional

Elder Gerald N. Lund will speak at the campus devotional on Tuesday, Sept. 23, at 2 p.m. in the Hart Auditorium. He was called as a member of the Second Quorum of the Seventy April 6, 2002. As part of this assignment, Elder Lund serves as assistant executive director for both the Missionary and Curriculum Departments of the Church. An educator by profession, Elder Lund studied sociology at BYU, earning both a bachelor's and master's degree.

He pursued additional studies at Pepperdine University and the University of Judaism in Southern California. During his 34-year career, he worked for the Church Educational System as a seminary and institute teacher, a curriculum writer, and a zone administrator. Elder Lund is also the author of numerous articles and 20 books, including a series of well-known historical novels.

Recently-hired employee spotlights



Dominic Bailin

Dominic Bailin is working as a custodian in the Custodial Department. He received an associate degree in communications and broadcasting from Ricks College and an associate degree in PC networking from Collin College in Arizona. He is currently pursuing a bachelor's degree from BYU-Idaho.



Thomas Brown

Thomas Brown is working as an application analyst in the Enterprise Information Systems Department. He previously worked for AREVA T&D, one of the largest companies in the global energy market. Thomas earned a bachelor's degree in information systems from Idaho State University and an MBA with an information systems focus from the University of Seattle.



Brittany Clinton

Brittany Clinton is working as a registration specialist in the Student Records & Registration Department. She most recently worked for a company in Las Vegas in an administrative position. Brittany earned a bachelor's degree in English from BYU.



Michael Farmer

Michael Farmer is working as an application analyst in the Enterprise Information Systems Department. He previously worked for a company headquartered in Orem, Utah, holding several different positions. Michael will soon graduate from BYU-Idaho with a bachelor's degree in computer information technology.



Blake Grover

Blake Grover is working as an application analyst in the Enterprise Information Systems Department. He worked previously for IC-Serv, Inc., as an information technology manager. Blake graduated from BYU-Idaho with a bachelor's degree in computer information technology.



Jena Hagen

Jena Hagen is working as a head resident for BYU-Idaho Housing. She worked previously at Melaleuca as a supervisor and team lead. Jena is pursuing a bachelor's degree from BYU-Idaho in business management.



Boyd Baggett

Boyd Baggett is teaching in the Religious Education Department. He was raised in Buhl, Idaho. He received a B.S. in agriculture economics from BYU and juris doctorate from J. Reuben Clark Law School at BYU.



Shawn Dorman

Shawn Dorman is teaching in the Religious Education Department. Shawn received a B.A. in English from BYU and juris doctorate degree from J. Reuben Clark Law School at BYU. He was a former civil law attorney whose field of emphasis was medical malpractice.



Drew Eagar

Drew Eagar is teaching in the Business Management Department. He received a B.A. in Spanish and MBA with a marketing emphasis from BYU. Drew has worked for the National Security Agency, but he recently was vice president of innovation at Denny's Restaurants. He has also led innovation efforts for Pizza Hut and Blockbuster.



Heidi Eastman

Heidi Eastman is teaching in the Mathematics Department. She obtained an associate degree in mathematics and physics from Ricks College, bachelor's degree in applied mathematics from BYU-Idaho, and master's degree in mathematics from Utah State University.



Kory Godfrey

Kory Godfrey is teaching in the Computer Information Technology Department. He earned an A.A.S. in computer information systems from Ricks College, B.S. in information systems and technology from Weber State University, and MBA in information systems with an emphasis in information assurance from Idaho State University.

Birthdays

September 18-24

- 18 Gracie Hill, LDS Philanthropies
19 Henry Eyring, Executive Offices
Emily Sonderegger, Student Financial Aid
Ray Versluys, Theatre
Jason Williams, English
20 David Lankford, Exercise & Sports Science
21 Jason Lenz, HVAC
Tim Whitworth, Electrical
22 Jacquel Fluckiger, Admissions
Fred Free, Catering
Shawn Johansen, History/Geography/Political Science
Martha Scott, Art
Stephen Smith, Sociology & Social Work
23 Russel Benedict, Financial Services
Ronald Boring, Psychology
Sheldon Kidd, Accounting
Ed Kumferman, Foreign Language
24 Terry Call, Religious Education
Christopher Moore, LDS Philanthropies
Dale Wright, Mechanics Operations

Sale Items

News & Notes classified ads are for employees of BYU-Idaho only. Items for sale must be the advertiser's personal property, and ads are subject to editing for length and clarity.

8-inch Orion reflector telescope, nearly new, with extra eye pieces, filters, carrying case, and computerized 15,000 celestial object star finder. Included are three books that explain everything. \$825 invested, will sell for \$600. Call Bill at 356-3819.

Rexburg home, 2,900 sq. ft., 6 bedrooms, A/C, 1 acre, landscape with sprinklers, quiet country neighborhood. \$259,000. See pictures at houseoflearning.wordpress.com. Call 656-8826.

2100 sq. ft. home on beautifully landscaped 1 acre lot. 4 bedroom, 2 1/2 bath, 2-car garage. Country living, but close to campus (7 minute drive). Great neighbors and ward. Sugar-Salem School District. Appraised for \$230,000, asking \$199,900. Mature trees, large lawn for play, fruit trees, raspberries, food storage room, lots of built-in storage, W/D, cul-de-sac. Call Rich for more information at 313-1596.

Buckets and Tap Shoes to perform this weekend

Buckets and Tap Shoes will perform Friday and Saturday, Sept. 19 and 20, at 7:30 p.m. in the Kirkham Auditorium. Tickets are \$5 for BYU-Idaho students and employees, and \$10 for the general public. Since 1997, the troupe of musicians, percussionists and rhythm tap dancers has astounded audiences creating intense, driving rhythms with 5-gallon buckets, metal cans, barrels, found objects, and tap shoes.

Thank You

I would like to thank everybody in the university for their prayers, concerns, and well wishes when my wife, Kris, was battling cancer. For the warm treatments she received from staff, faculty, and students, it made her feel special. I also would like to thank the faculty and staff along with their respectful departments for the beautiful flowers, arrangements, and well wishes at the time of her funeral.

Bas Berkouwer

Thank you for the many expressions and acts of kindness that my family has been the beneficiary of during the last two weeks with my mother's passing and funeral. We have gained strength and peace from your faith and prayers. I extend my personal love and gratitude for the influence you are in my life and for the great blessing it is to work with you and to be part of the BYU-Idaho family.

Kathy Webb

Lost and Found remains open

The Lost and Found, located in 238 Manwaring Center, will remain open through the second phase of the building's construction. Hours are 9 a.m. to 6 p.m., Monday through Friday.

BYU-Idaho Lost and Found serves the needs of those who are seeking lost items and those who have found items on campus. Items found on campus should be submitted to the centralized Lost and Found as soon as possible. Found items may be turned into building custodians who deposit the collections daily with the Lost and Found.

Unclaimed items held longer than 60 days are sold to the public. The next public sale will be Friday, Oct. 17, from noon to 2 p.m. in the Manwaring Center West Ballroom.

MC Information Desk to close Sept. 26

Due to construction, the Manwaring Center Information Desk located on the second floor will close Sept. 26. Services previously offered at that location will be combined with the Kimball Information Desk. The Kimball Information Desk is located on the first floor and will be open normal business hours, Monday through Friday. The telephone extension 2200 will remain valid with campus telephone operators responding to after-hour calls. Information Desk services will return to the Manwaring Center when the current phase of construction is completed.

News & Notes

A weekly publication of
University Communications

If you have information for future issues, please contact
Don Sparhawk at 496-1152 or email sparhawkd@byui.edu.

226 Kimball Bldg.
Rexburg, ID 83460-1660
(208) 496-1150